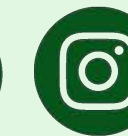




Sheffield General  
Cemetery Trust

CONNECT WITH US



*Support Us* | Leaving a Legacy In Your Will



Please consider remembering Sheffield General Cemetery Trust in your will.

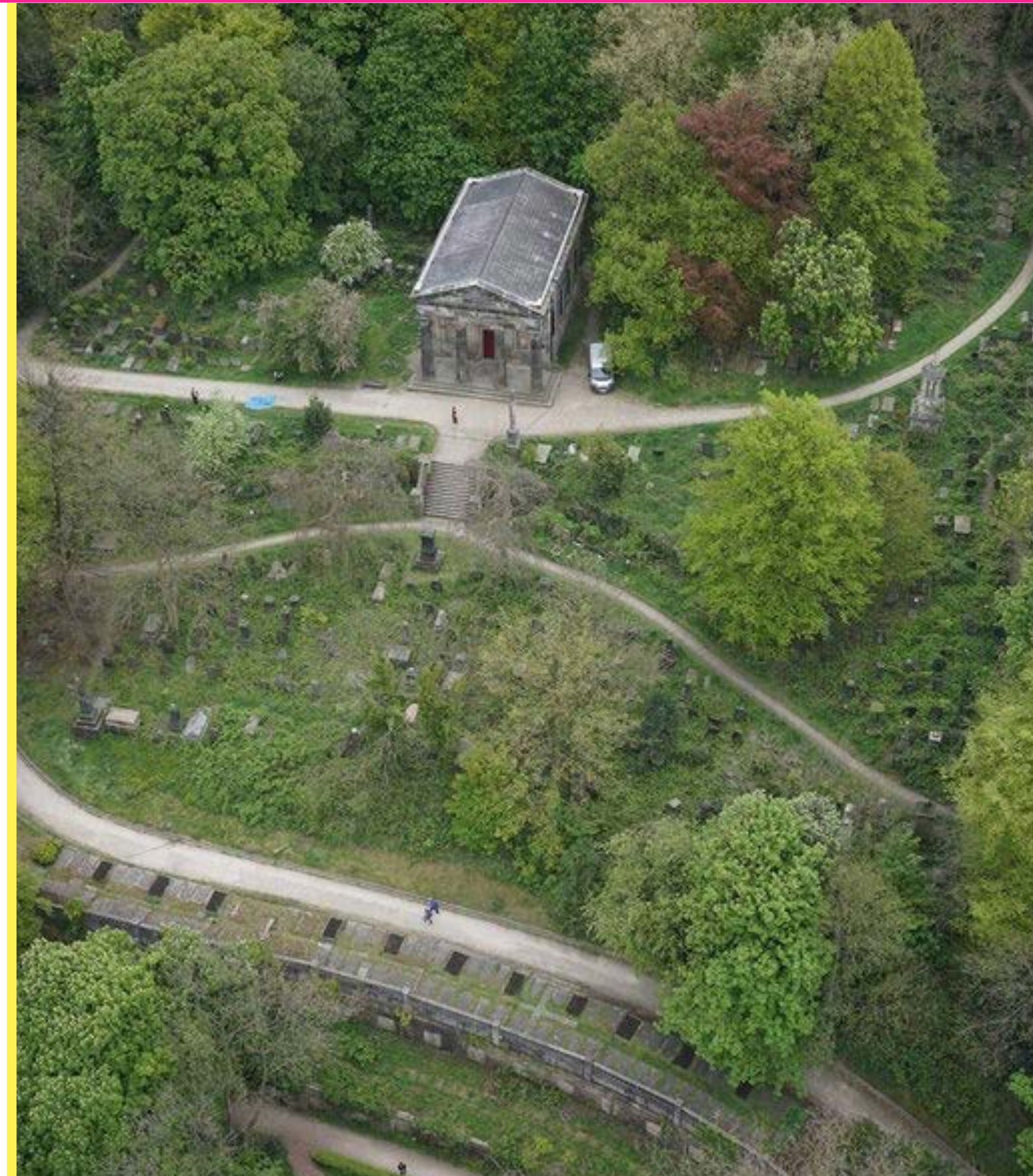
Donations and legacies to the Sheffield General Cemetery Trust (SGCT) are of enormous importance, enabling the Trust to keep the Cemetery landscape attractive and safe for our visitors and to support our research and educational work



If the Sheffield General Cemetery, its woodland walks and its wealth of history are special to you - please think about leaving a legacy in your Will to support the work of the Sheffield General Cemetery Trust, a registered charity (No. 11 03158).

We will use any legacies to ensure that the Cemetery and its natural environment are kept as an openly accessible place showcasing both history and nature. This will be especially important in future. The Trust will need to invest to do more to ensure that the large investment in the landscape and structures of the Cemetery by the National Lottery Heritage Fund creates a lasting benefit to the local communities long after the major project has ended.

With your help we can achieve these ambitions





# 87,000 STORIES

Over 87000 people were buried in the Cemetery between 1836 and 1978, by which time it was overgrown, derelict and dangerous. In 1989 local residents formed the Friends of the General Cemetery, which duly became the Trust. For over 30 years local people have led a transformation of the site into a well-loved urban green space, and the Trust's groups of volunteers continue to do so today.

The Trust aims to allow the man-made history and architecture of the listed Victorian Cemetery to be seen in harmony and balance with nature and the wildlife that has taken up residence over nearly 200 years. By maintaining the landscape, running regular guided tours, researching and publishing the history of the site and its occupants, and restoring the once-derelict Samuel Worth Chapel and the Gatehouse and Lodge, the Trust has made a huge difference. We are working closely with Sheffield City Council and the National Lottery Heritage Fund to deliver improvements and sensitive conservation work to ensure the historic Cemetery and its natural habitat are safeguarded for the next 100 years and accessible for future generations to enjoy.

As a small charity our work in the Cemetery and the local community is constrained by our need to raise every penny we spend - all donations and legacies, of any size, will be used to continue and expand the Trust's work in Sheffield.



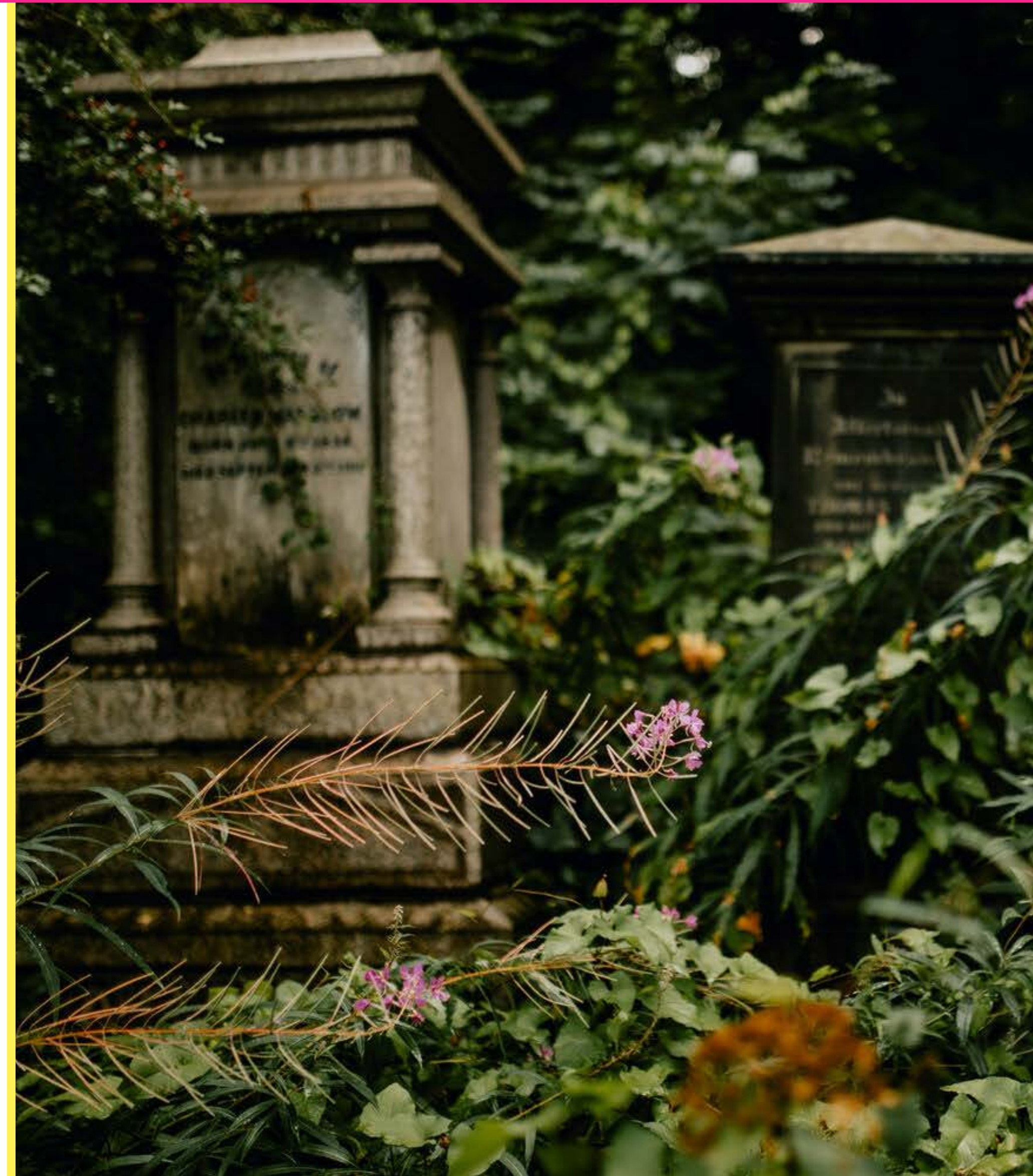


# OUR CEMETERY PARK

The Cemetery is a unique place in South Yorkshire - it is a designated Local Nature Reserve and a Grade II\* listed landscape in the National Register of Historic Parks and Gardens. Sheffielders and visitors enjoy a 13 acre green parkland only a mile from the City centre.

It has 3 Grade II \* listed structures - The Gatehouse and Lodges and the Samuel Worth Chapel are owned by, and have been restored by the Trust, whilst the Egyptian Gateway and adjoining walls on Cemetery Road form part of the boundary. There are a further 7 buildings and monuments listed at Grade II, including the Victorian Catacombs, the abandoned Anglican Chapel and the original Cemetery Company offices, now a children's nursery. By the Montague Street entrance there is a memorial wall to remember those who lost their lives in the 2 World Wars and who are buried in the Cemetery.

The Samuel Worth Chapel has been restored from dereliction by the Trust, and has a new lease of life as an events venue for hire for weddings, performances, parties, meetings and community events - please see our website [www.gencem.org/thevenue](http://www.gencem.org/thevenue) for more information.





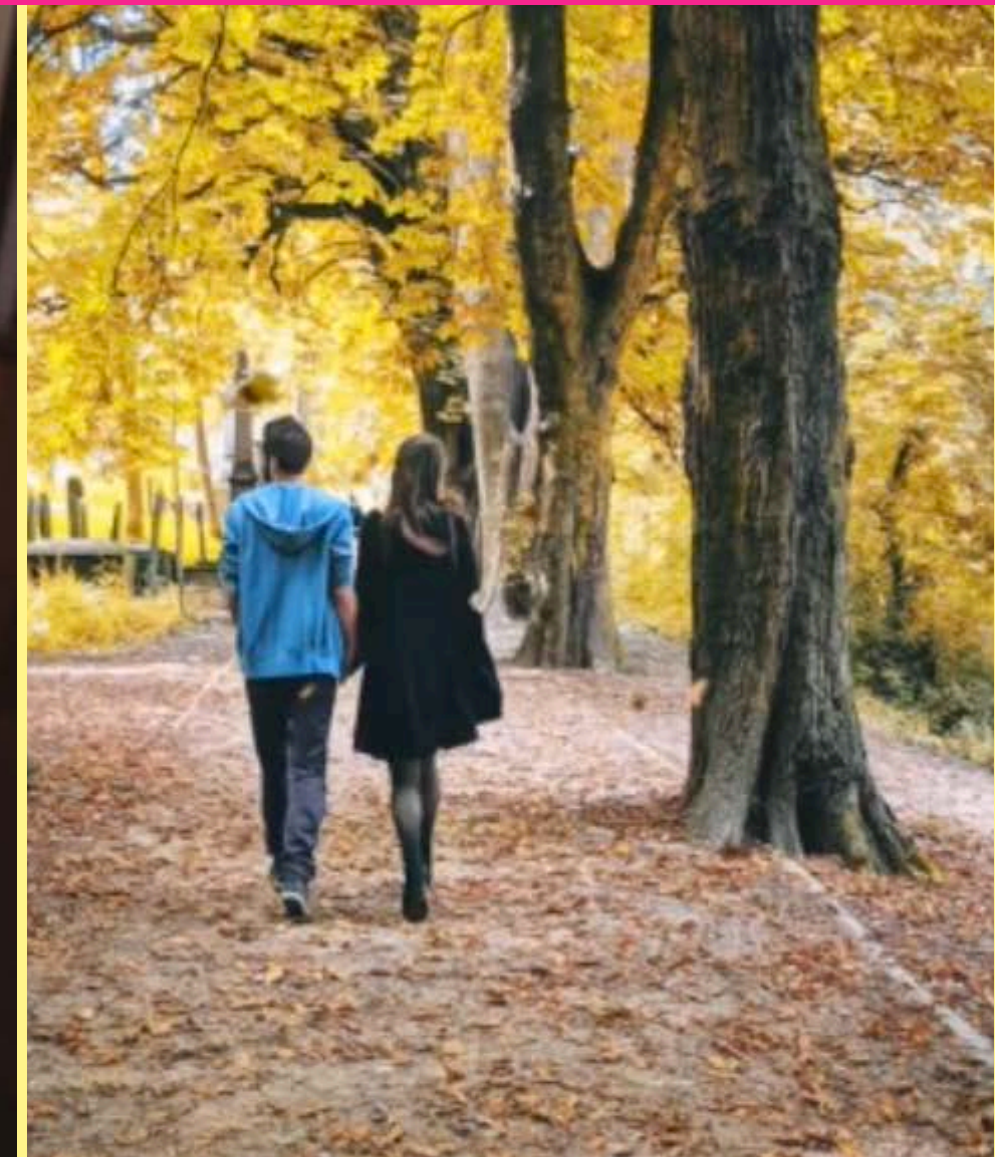
## WHAT OUR VISITORS SAY

*"This place is incredible! Very quiet and serene, and a real feast for the eyes. I felt like I had found a little oasis hidden in the middle of the city. It is a great place for a picnic and a walk. I would love to do a guided tour to learn about what I saw"*

*"I walk through the cemetery on most days and it always brightens up my day. The grounds are so well kept and many of the graves are tended so that you can read the descriptions and learn about the characters buried there. In April the cemetery is teeming with beautiful daffodils and provides lovely backgrounds"*

*"My favourite place in Sheffield to just go and sit and chill out. It's like a fairytale setting all year round! The volunteers who help with the upkeep of the Cemetery are amazing. It's just such a lovely space, and needs loving for everyone to enjoy!!!"*

*"This is the first time I have visited a cemetery for a walk, yet I was astounded by the beauty of the place. It bleeds beauty and speaks a thousand words"*





# A LEGACY TO SHEFFIELD GENERAL CEMETERY TRUST

For nearly 200 years the Sheffield General Cemetery has provided a place for contemplation and more recently relaxation for generations of Sheffielders and visitors. For much of that time it was also a thriving business, but since the 1950s it deteriorated into dereliction and was abandoned. Early plans for conservation were stymied by the economic climate of the 1980s, and the story of the Friends and the Trust has been one of a continuous battle to raise funds whilst encouraging hundreds of volunteers to give their time and hard work to maintain and improve the extensive grounds.

*"The Trust has been supported financially by many local people and organisations, but in these times they have so many calls on their limited resources. We are very grateful to all our supporters for their generosity and help over more than 30 years. If, like me, you love this special place, no longer 'remote and undisturbed' but just a mile from the centre of Sheffield off the buzzing Ecclesall Road, please leave a legacy to the SGCT to help us to conserve and protect the Cemetery for Sheffielders and visitors for many years to come".*

*Mike Clarke, Chair of Sheffield General Cemetery Trust*





# What words should I use in my will?

The Sheffield General Cemetery Trust is a Registered Charity (No. 1103158). This means that it pays no tax on gifts of money or property made in your lifetime or after your death. So any legacies left to the Trust are given in their entirety and are not subject to inheritance tax.

You can donate to us through your will by way of a fixed amount, gift of a specific item or by leaving what's left of your estate after other gifts have been given out. Below we have set out suggested wording you could use in your will.

## **Fixed Sum:**

*"I give to The Sheffield General Cemetery Trust (Registered Charity 1103158) the sum of £ ..... (in words and figures) free from all taxes and duties, to be applied to the general purposes of the said Trust and I declare that the receipt of the Chairman of the Trust or other authorised trustee for the time being of the Sheffield General Cemetery Trust shall be good and sufficient discharge to my executors".*

## **Gift of the balance your Estate:**

*"I give to The Sheffield General Cemetery Trust (Registered Charity 1103158) all [or a percentage or share] of my residuary estate to be applied to the general purposes of the said Trust and I declare that the receipt of the Chairman of the Trust or other authorised trustee for the time being of the Sheffield General Cemetery Trust shall be good and sufficient discharge to my executors."*

## **Leaving a specific item:**

*"I give to The Sheffield General Cemetery Trust (Registered Charity 1103158) my [description of property] free from all taxes and duties, to be applied to the general purposes of the said Trust and I declare that the receipt of the Chairman of the Trust or other authorised trustee for the time being of the Sheffield General Cemetery Trust shall be good and sufficient discharge to my executors."*

## **If you or your solicitor or executor would like to discuss your legacy intentions please contact:**

The Sheffield General Cemetery Trust Legacy Information c/o The Gatehouse, Cemetery Avenue, Sheffield S11 8NT, or email [SGCT@gencem.org](mailto:SGCT@gencem.org)





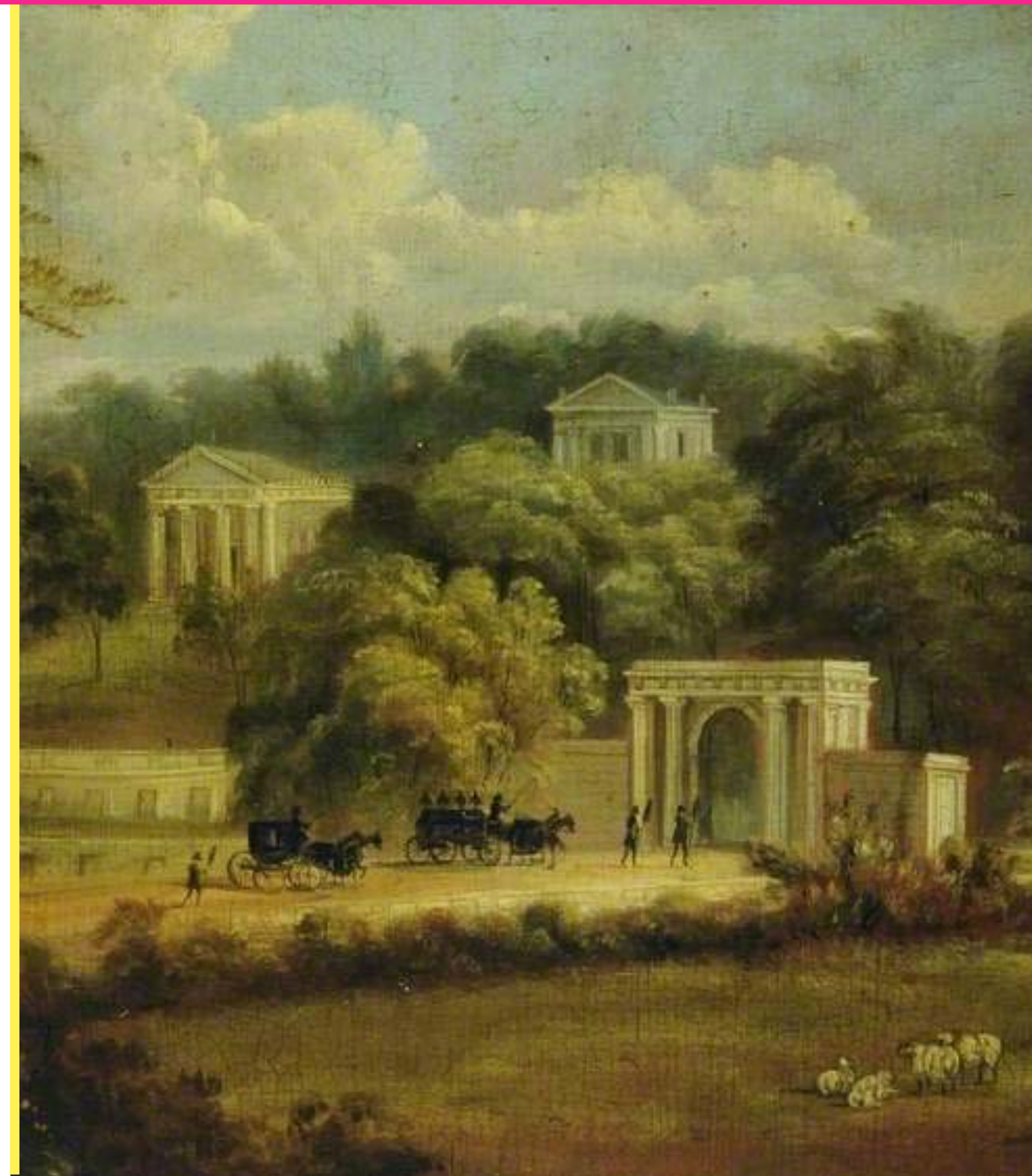
# A SHORT HISTORY OF THE CEMETERY

The Cemetery was opened in 1836, one of the first private cemetery companies in England. Sheffield's fast growing population in dangerous industries and insanitary conditions led to church graveyards becoming full and Sheffielders seized the opportunity to lay out an impressive new privately owned and financed cemetery in the 'remote and undisturbed' Porter Valley.

As one of the first private cemeteries in England and thanks to its position on the steep south side of the then picturesque valley, the owners and architects wanted to make an impression. The Cemetery was visible from the newly built Botanical Gardens, and from the mansions of the City's leading citizens who lived on the opposite side of the valley. You can still see the layout and buildings of the original Nonconformist part of the Cemetery pretty much as they were then, though it was not until around 1850 that the Cemetery became profitable, after the Anglican part was added making a total of 13 acres.

By 1900 the Cemetery was filling up and after the First World War burials declined in popularity. By the mid-1900s the Cemetery was little used and the land and buildings became overgrown and derelict. Sheffield City Council purchased the site in the 1970's to save it from further decay and to create an area of much needed public open space for the inner city. Paths were opened up and most of the Anglican gravestones removed to create the parkland area. The spire of the unused Anglican Chapel (not controlled by the Trust) is still a feature of the skyline. The Gatehouse was restored by the Trust in 2002 and the Samuel Worth Chapel in 2016.

Working with the National Lottery Heritage Fund and in consultation with the Trust, the City Council began another major programme of work in 2020 so that essential structural repairs and landscape improvements should safeguard the Cemetery Heritage Park for the next 100 years. To ensure this capital investment is not wasted, the Trust's small team of staff and volunteers is needed more than ever to keep the site attractive and safe for visitors and to ensure that the Cemetery remains a special place close to the heart of Sheffield.





As we look to the future, support through donations and legacies will remain of great importance to the Trust as we continue to maintain this beautiful landscape and help to explain its history and natural features to our fellow Sheffielders and our visitors from far and wide.

Thank You.

**Contact us:**

For general enquiries including booking the Samuel Worth Chapel events venue and our regular guided tours:

**W:** [gencem.org](http://gencem.org)

**E:** [sgct@gencem.org](mailto:sgct@gencem.org)

**T:** 0114 268 3486



*Photo & Art Credits: Alex Quant, Andrew Quant, Kerry Adams, Liam Rimington, Jane Horton, Taz Chars, Rachel Stevenson, Wessex University and Shaken Not Stirred Events.*

SGCT LEGACY BROCHURE NOVEMBER 2020

Registered charity (no. 1103158) and a company limited by guarantee incorporated in England & Wales (no 04997593).