



Sheffield
General
Cemetery
Trust

marketingandevents@gencem.org
0114 2683486

Events at The Samuel Worth Chapel

The Samuel Worth Chapel is a beautiful and intimate venue set in the heart of our nature reserve. Designed by Samuel Worth in 1836, the building was completely restored in 2016 winning a Georgian Group Award for its restoration. Its grand entrance leads you into a simple and elegant interior, flooded with natural light. The fine architecture set against the wooded hillside provides a stunning backdrop for photos. The space allows for wedding blessings, concerts, conferences, exhibitions and cinema screenings and much more. The adjacent green space with wild flowers and lawned area gives you the opportunity to celebrate outside as well as in.



FAQ

Is the Samuel Worth Chapel available to hire all year round?

Absolutely! The chapel and cemetery looks beautiful during every season.

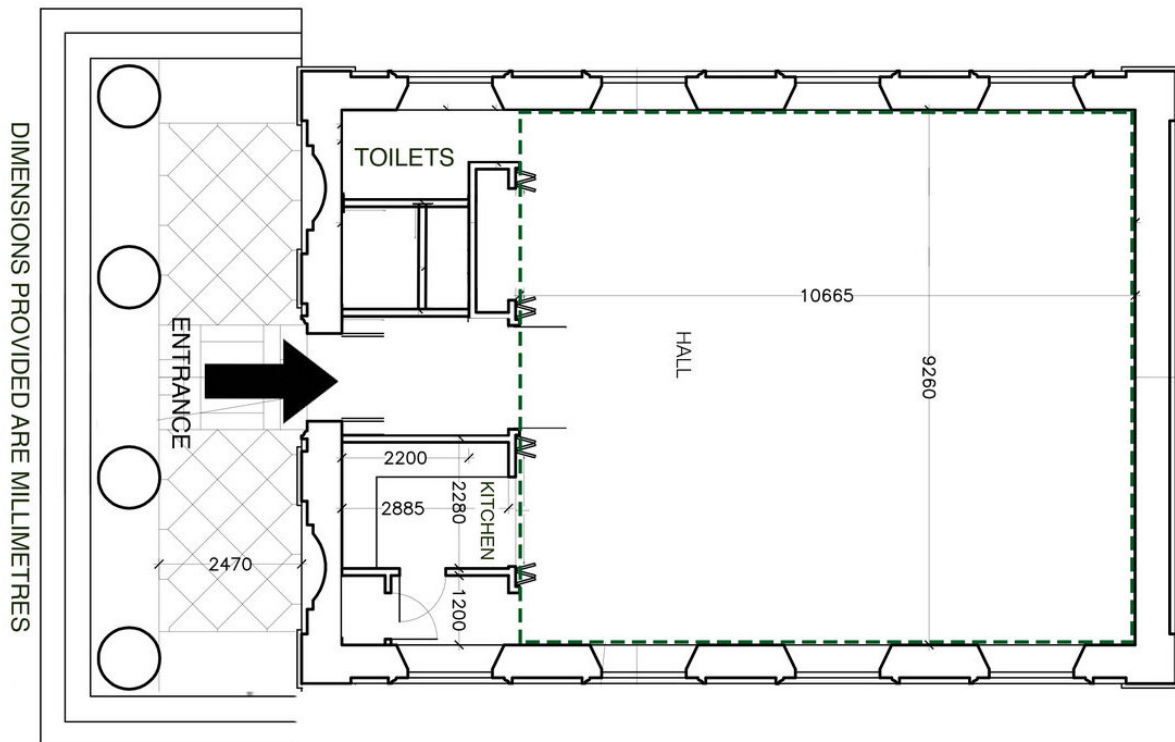
What sort of events could I hold at the venue?

We host many different types of events at The Samuel Worth Chapel. Below is a list of events we have hosted over the last 4 years.

- Weddings.
- Wedding receptions.
- Birthday parties.
- Kids parties.
- Community and charity fundraising events.
- Club nights.
- Classical performances (the acoustics are incredible for choral performances).
- Gigs and open mic nights.
- Film screenings.
- Lectures and talks.
- Conferences and training.
- Memorials and end of life celebrations.
- Thanksgiving and Christmas parties.
- Yoga sessions.
- Craft & makers markets.
- Exhibitions.
- Craft workshops.
- Poetry, spoken word and theatrical performance.

How big is The Samuel Worth Chapel?

The main hall area is 10.6m x 9.2m. See the floor plan below:



What is the capacity?

The capacity of our space is 60 which includes all staff and any performers too, so please bear that in mind when planning your guest list.

What equipment and facilities does the venue have?

The chapel is offered on a 'dry hire' basis and has a fully fitted kitchen with crockery, cutlery and glassware and serving hatch, 2 toilets one of which is wheelchair accessible, heated tiled floor, 8 large round tables, 60 folding chairs and 2 x rectangular trestle tables.

We have the following audio visual items for hire:

Projector £100 + VAT per day

Sanyo XF47
15,00 Lumens
XGA 1024 x 768 resolution
VGA or HDMI connection via the Chapel network



PA system £60 + VAT per day

QSC 1kw powered speakers on stands (black) A 4 channel Mix8 Desk with 2 stereo inputs and 2 mono inputs. It comes with a mini Jack lead for a device and a Shure handheld radio microphone.



PA system £50 + VAT per day

HP 14in EliteBook 840 G3 Ultrabook - Core i5-6300U | 6GB DDR4
512GB SSD WebCam WiFi Windows 10 Office 365.

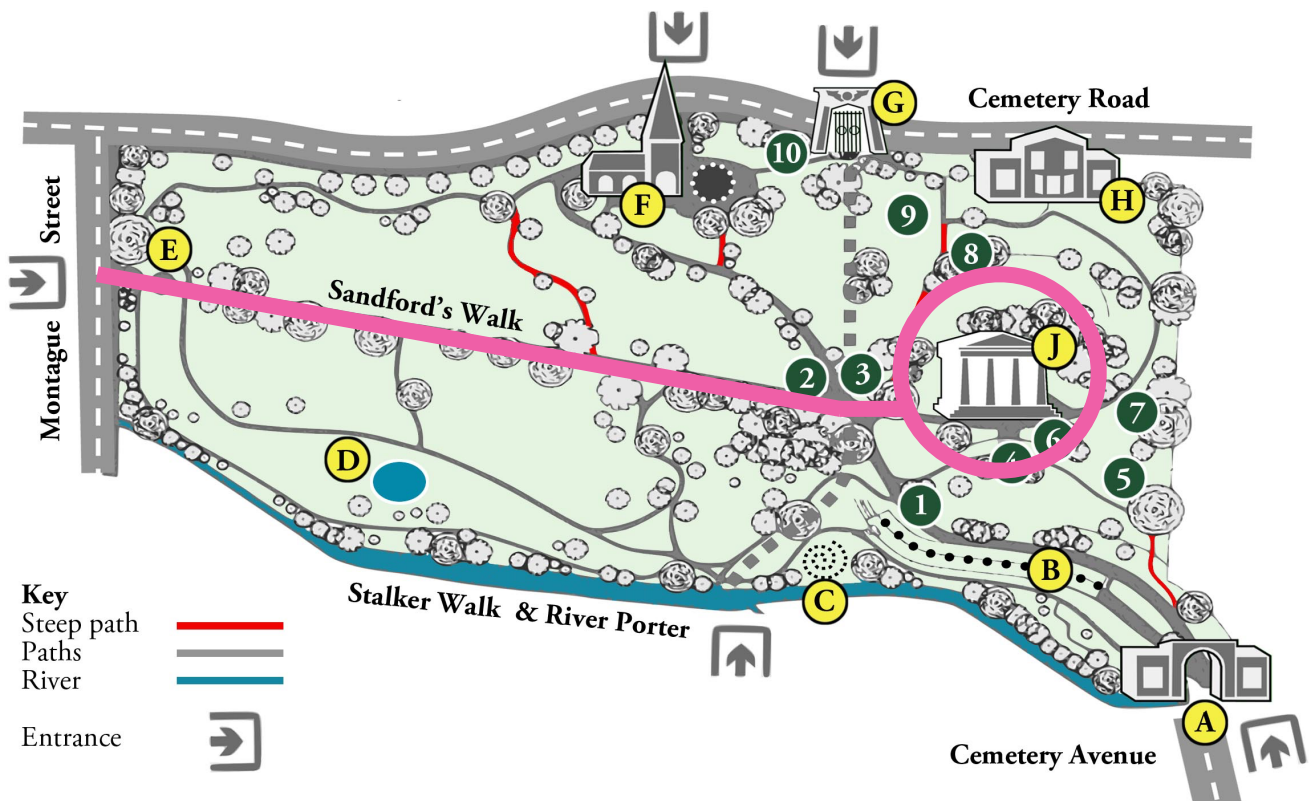


Outside electricity is available. Price on request.

How do vehicles access the chapel?

Cars and vans can access the site via Montague Street, just off Cemetery Road, then drive at 5mph with hazard lights on, all the way up Sandford's Walk to the front of the chapel. Vehicle access is only for deliveries, event vehicles and disabled visitors for the duration of the event. No vehicles are to be left onsite overnight.

Sandford's Walk is highlighted in pink on the map below:



A. Gatehouse. Listed Grade II*. 1836. Original grand entrance to the Cemetery. Once housed Cemetery employees, now SGCT office and a private flat. B. Catacombs. Listed Grade II. 1836. C. Stone Spiral. Educational and design feature to demonstrate geology. 2004. D. Wildlife Pond. Created by volunteers. 2018. E. War Memorial. Erected here by the Commonwealth War Graves Commission 2015. F. Anglican Chapel. Listed Grade II. 1850. Designed by William Flockton. G. Egyptian Gate. Listed Grade II*. 1836. Ornamented with ancient symbols. H. Original Cemetery office. Listed Grade II. 1836. J. Samuel Worth Chapel. Listed Grade II*. 1836. The original Nonconformist chapel designed in a Classical style with Egyptian style doors and windows by Samuel Worth.

Is the venue accessible for wheelchair users?

Yes! We have a wheelchair ramp at the chapel entrance. The most accessible route up to the chapel is via Sandford's Walk. For Blue Badge parking information, please email marketingandevents@gencem.org.

Can you connect us with local suppliers to help plan our event?

The Samuel Worth Chapel isn't tied into contracts with any specific companies so you are free to use whoever you wish. Our Events Team can recommend a range of fantastic local and national suppliers/ service providers such as florists, caterers, mobile bars, wedding planners and event designers, hair and make-up artists, photographers, videographers, light and sound technicians, furniture hire companies, celebrants, DJs and many more.

Will anyone from Sheffield General Cemetery Trust be on hand during our wedding and reception?

Yes! A member of our Events Team will be onsite to open and close the chapel and to assist with anything you might need during your event.

Will I need a Temporary Events Notice (TEN) for my event?

If you are planning on charging guests for alcohol and/or playing amplified music then you will need a Temporary Event Notice. Click the link below for more information about TEN.

<https://www.sheffield.gov.uk/home/business/licences-permits-registrations/temporary-event-notice>

You can also drop us an email for advice regarding your specific event via marketingandevents@gencem.org.

Do I need event insurance?

The Samuel Worth Chapel provides third party insurance but in some cases you might need to purchase more comprehensive and specific event insurance. Our Events Team are on hand to help with any questions you may have regarding event insurance.

How much does it cost to hire the Samuel Worth Chapel?

Monday - Thursday 9am - 11pm
£25 to £45 + VAT per hour depending on the type of event.

Friday - Sunday - 9am - 5pm
£25 to £45 + VAT per hour depending on the type of event.

Friday or Saturday Evening 5pm - 11pm
£430+ VAT

Schools and Charities

Monday - Thursday 9am - 11pm
£10 to £40 + VAT per hour depending on the type of event.

Friday - Sunday - 9am - 5pm
£10 to £40 + VAT per hour depending on the type of event.

Friday or Saturday Evening 5pm - 11pm
£150 - 250 + VAT depending on the type of event.

To secure a booking we require a non-refundable deposit which is 50% of the hire cost. The remaining balance and a refundable damage bond of £250 is required no later than 4 weeks before your event.

COVID UPDATE: Should your event need to be postponed due to government covid 19 restrictions we will try to find a new date for you free of charge. If your event can not be rescheduled and has to be canceled due to government covid 19 restrictions we will offer a full refund. For more information please email marketingandevents@gencem.org.

Can I book an appointment to view the chapel and discuss our ideas?

Yes! We love to show off our gorgeous venue! Email marketingandevents@gencem.org to book a viewing with our Events Team or call 0114 2683486 (Tuesday, Thursday and Friday).

SHEFFIELD CITY COUNCIL OWNS THE LAND ON WHICH THE CEMETERY AND THE SAMUEL WORTH CHAPEL IS SITED. THEY HAVE LEGAL RESPONSIBILITY FOR MAINTENANCE OF THE STRUCTURES AND THE CONSERVATION AREA. SGCT MANAGES THE SAMUEL WORTH CHAPEL, THE GATEHOUSE LODGE AND PROMOTES THE CEMETERY AS A PLACE OF HISTORICAL IMPORTANCE AND A HAVEN FOR WILDLIFE. REGISTERED CHARITY (NO. 1103158) AND A COMPANY LIMITED BY GUARANTEE INCORPORATED IN ENGLAND & WALES (NO 04997593).

E: SGCT@GENCEM.ORG T: 0114 2683486.
SHEFFIELD GENERAL CEMETERY TRUST, THE GATEHOUSE, CEMETERY AVENUE, SHEFFIELD, S11 8NT